



Feyen Zylstra



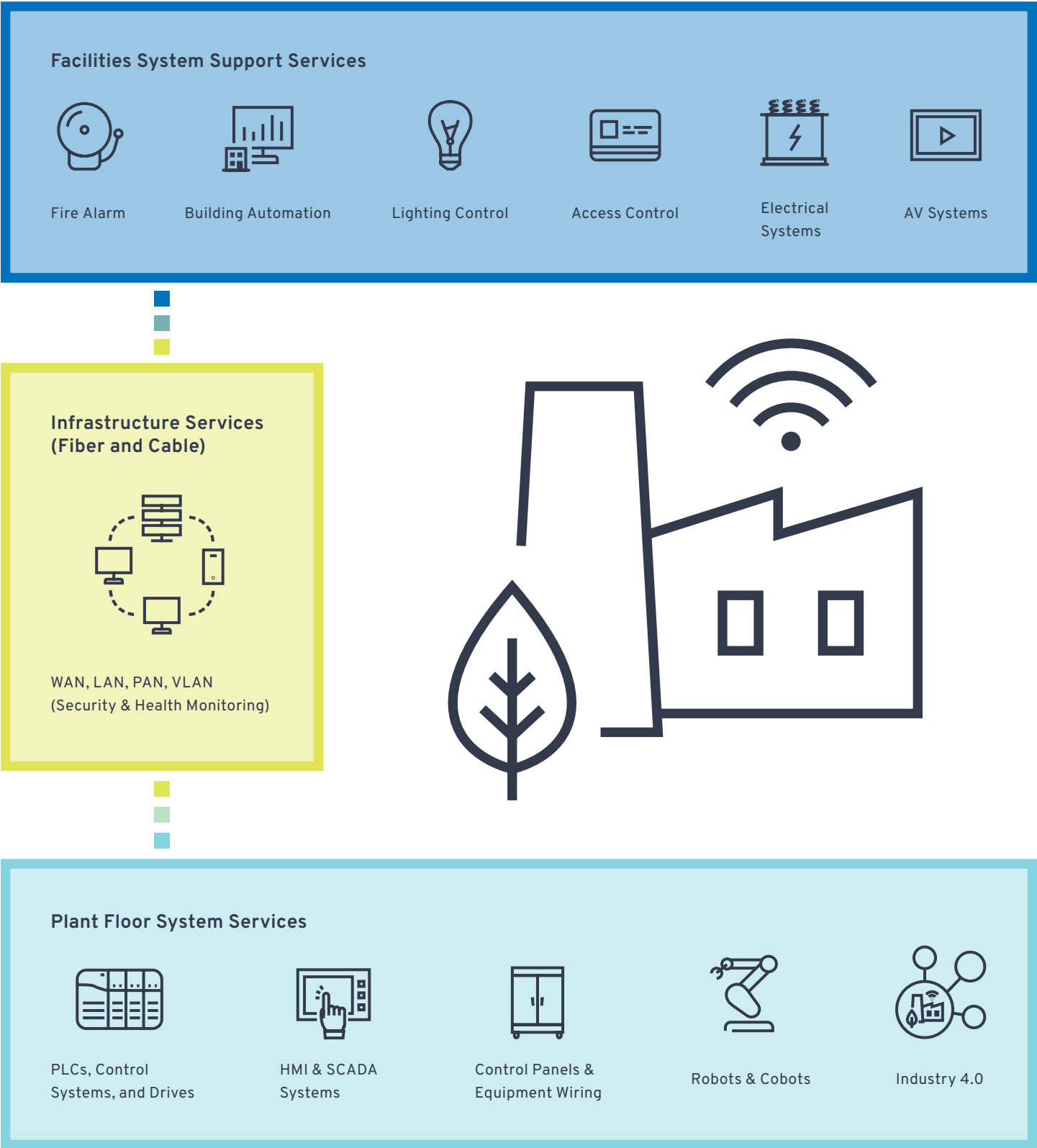
Who We Are

Marlin Feyen and Bob Zylstra started Feyen Zylstra in 1980 with one simple vision: to be the first-choice electrical resource in the market. Since our humble beginning, Feyen Zylstra has grown to become a national, forward-thinking electrical services and industrial technology firm serving a wide range of customers with diverse needs.

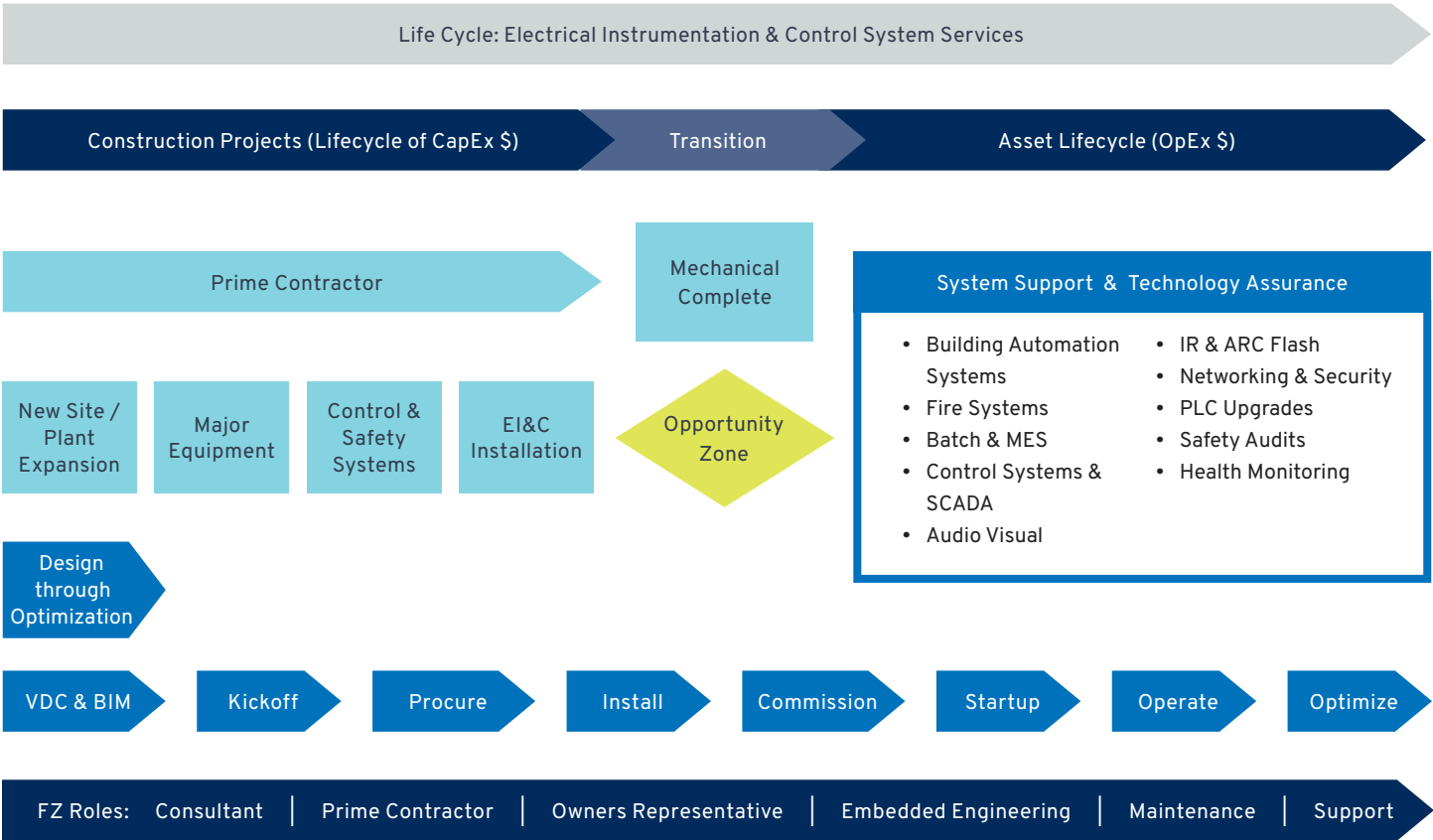
Today, we're carrying the vision forward with a highly skilled team of electricians, technicians, and engineers who are shaping the industry with innovative solutions. For decades we've earned the reputation as the best of the best, leveraging our capability and creativity to address our customers' most challenging problems.

Whether it's design, installation, or maintenance of electrical, low voltage, or automation systems, we approach complex problems with technical brilliance, creating innovative solutions that work for our customers. We out think, out work, and out train the rest to deliver outstanding results—building relationships and doing our part to have a positive impact on the lives of people.

Your Trusted Partner for Facility & Plant Floor Systems



FZ, Your End to End System Services Provider, from CapEx Projects through Optimization Services





Maintenance

FZ helps prevent unscheduled downtime and keeps equipment running.



Electrical Services

- 24-Hour Emergency Service
- Infrared Thermography Assessments and Studies
- Preventative Maintenance
- Machine Troubleshooting and Electrical Repair
- Transformer, Switch Gear, Re-torquing to Specs, and Control Panel Terminations
- Arc Flash Studies



System Deployment & Infrastructure Support

- Network Cabling Testing and Verification (Fiber/Copper)
- Fiber/Copper Troubleshooting and Repair
- OTDR Testing and Verification
- CCTV Camera Systems Installation
- Building Automation System Support



Industrial Technology

- PLCs and Control Systems Support and Troubleshooting
- Control Panel Support, Troubleshooting, and Maintenance (UL Certification)
- Control System Support and Migrations
- HMI and SCADA System Support, Troubleshooting, and Migrations
- Drive Systems Support, Troubleshooting, and Maintenance
- Infrastructure Networking, Support, and Troubleshooting (Logical and Physical Layers)
- Machine and Equipment Troubleshooting Support
- Maintenance Programming Support, Troubleshooting, and Training



Facilities

FZ helps you keep your facility's systems running.



Electrical Services

- 24-Hour Emergency Service
- Infrared Thermography Assessments and Studies
- Preventative Maintenance Tasks and Scheduling
- Lighting Controls, Programming, and Layout
- Arc Flash Studies (Update One-line Drawings) and In-house Training
- LED Retrofits and Upgrades
- Transformer, Switch Gear, Re-torquing to Specs, and Control Panel Terminations
- Power Quality Assessments (Machine, Line, Plant)
- Energy Management Monitoring



Outdoor Services

- Underground Conduit and Cable Installation
- Trenching, Excavation, and Vibratory Plowing
- Light Pole Bases and Light Pole Installation
- Medium Voltage Conduit and Cable Installation and Termination
- Transformer Setting and Heavy Equipment Rigging
- Temporary Power and Services



System Deployment & Infrastructure Support

- Building Automation System Installation
- Fire Alarm Systems Installation/Life Safety Systems
- Underfloor Air Distribution Systems Installation
- Wireless and Wireless Access Points Installation
- CCTV Camera Systems Installation
- Access Control System Installation
- Laboratory Controls System Installation (Controlled Positive or Negative Air Flow)



Audio Visual Support

- Conference Room/Training Room/Huddle Space Technology System
- Video Conferencing and Presentation Systems
- Design Build and Consultation
- Video Walls
- Digital Signage
- On-call Technology Service
- Room Scheduling Solutions
- Commercial Paging and Sounds Masking
- AV Control Systems (i.e. Crestron/others)



Industrial Technology

- PLCs and Control Systems Support and Troubleshooting
- Control Panel Support, Troubleshooting, and Maintenance (UL Certification)
- Control System Support and Migrations
- HMI and SCADA System Support, Troubleshooting, and Migrations
- Drive Systems Support, Troubleshooting, and Maintenance
- Infrastructure Networking, Support, and Troubleshooting (Logical and Physical Layers)
- Machine and Equipment Troubleshooting Support
- Building Automation Systems Support
- Maintenance Programming Support, Troubleshooting, and Training



Engineering

FZ designs, builds, and supports
your plant systems.



Electrical Services

- 24-Hour Emergency Service
- Onsite Machine Wiring and Panel Build
- Electrical Power and Automation Installation in Sensitive Environments
- Legacy Upgrades—Machine and Safety Systems
- Transformer, Switch Gear, Re-torquing to Specs, and Control Panel Terminations
- Code Recommendations/Compliance Assessments
- Power Drops to Machines, Lines, etc.
- Network Drops to Machines and Lines
- Some Hardware Upgrades from Relays to PLCs
- Panel Updates
- Facility Assessment and Design



System Deployment & Infrastructure Support

- Network Cabling Testing and Verification (Fiber/Copper)
- Data Center Installation and Support
- OTDR Testing and Verification (Fiber)
- Wireless and Wireless Access Points Installation
- CCTV Camera Systems Installation
- Embedded Onsite Engineering Support



Industrial Technology

- PLCs and Control Systems Design and Specifications
- Control Panel Design, Build, Support, and Maintenance (UL Certification)
- Control Systems
- Control System Support and Migrations
- HMI and SCADA System Design, Support, and Migrations
- Reporting, Dash Boarding, and Analytic System Design, Support, and Maintenance
- End of Line Testing and Tracking Design, Support, and Maintenance
- FIS Design, Support, and Maintenance
- Batch System Design, Support, and Maintenance
- Drive Systems Design, Support, and Maintenance
- Industrial Networking and Design (Logical and Physical Layers)
- Automation Road Mapping by Site
- Virtual Machine Design, Support, and Maintenance
- Industrial Data Center Server Design, Support, and Maintenance
- Remote Connectivity and Health Monitoring System Design, Support, and Maintenance
- Robotic System Design, Programming, and Support
- Smart Manufacturing/Industry 4.0 Preparation, Selection, Design, Support, and Maintenance
- Industrial Data Management & Traceability (Historian) Design, Support, and Maintenance
- Machine and Line Safety System Design, Support, and Maintenance
- Equipment and Line Relocation Services
- Pick to Light and Material Movement Systems
- Part Tracking and Quality Inspection Systems
- Data Collection and Reporting Systems (OEE and Quality)
- Robotic Applications





feyen zylstra

